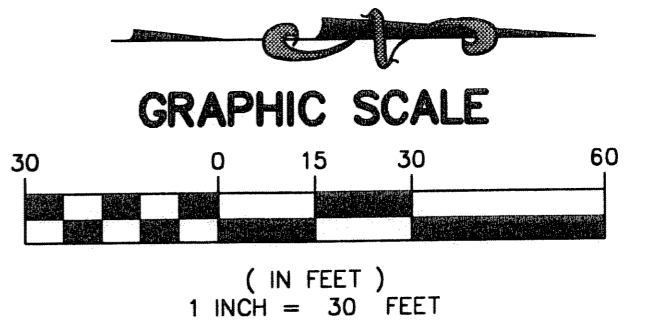
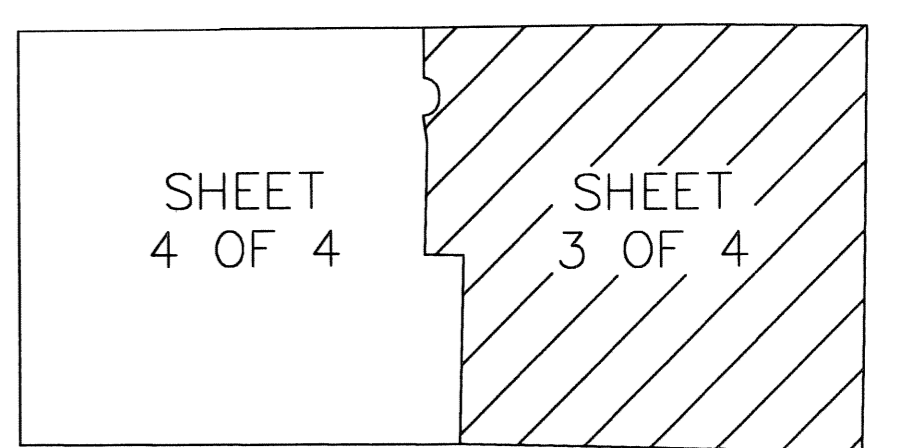


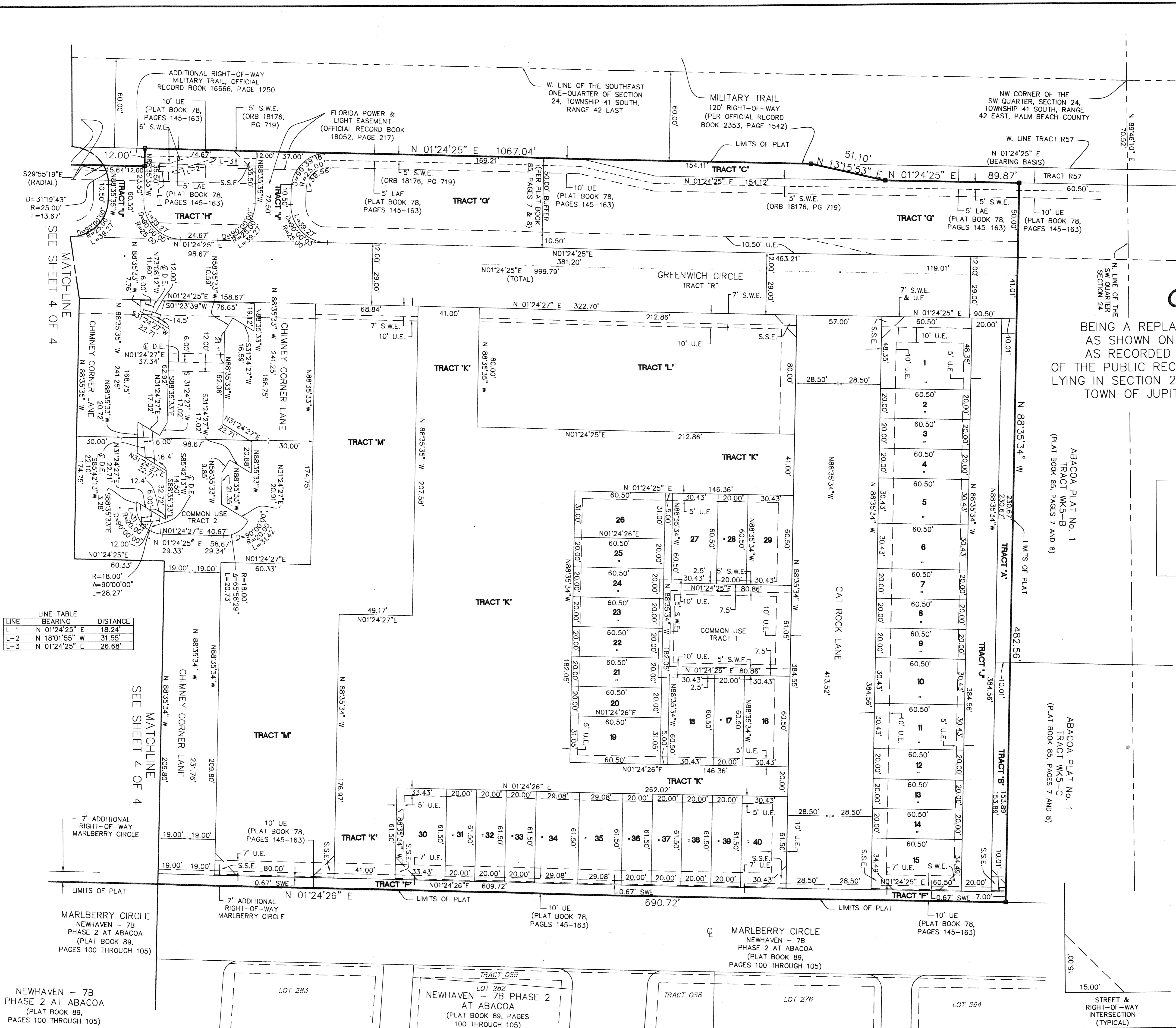
157

GREENWICH

BEING A REPLAT OF A PORTION OF TRACT "WK5-A",
 AS SHOWN ON ABACOA - REPLAT OF TRACT WK5
 AS RECORDED IN PLAT BOOK 85, PAGES 7 AND 8
 OF THE PUBLIC RECORDS OF PALM BEACH COUNTY, FLORIDA.
 LYING IN SECTION 24, TOWNSHIP 41 SOUTH, RANGE 42 EAST
 TOWN OF JUPITER, PALM BEACH COUNTY, FLORIDA.
 AUGUST 2004
 SHEET 3 OF 4



- ABBREVIATIONS:
- 1. D = DELTA (CENTRAL ANGLE)
 - 2. R = RADIUS
 - 3. L = ARC LENGTH
 - 4. CB = CHORD BEARING
 - 5. CD = CHORD DISTANCE
 - 6. PM = PERMANENT REFERENCE MONUMENT LB 6680
 - 7. * = PERMANENT CONTROL POINT LB 6680 SET UNLESS OTHERWISE NOTED
 - 8. PUD = PLANNED UNIT DEVELOPMENT
 - 9. LB = LICENSED BUSINESS
 - 10. LAE = LIMITED ACCESS EASEMENT
 - 11. U.E. = UTILITY EASEMENT
 - 12. S.W.E. = SIDEWALK EASEMENT
 - 13. LB = LICENSED BUSINESS
 - 14. CB = CURVE BEARING
 - 15. CD = CURVE DISTANCE
 - 16. SSE = STREET & RIGHT-OF-WAY INTERSECTION
 - 17. DE = DRAINAGE EASEMENT



LINE TABLE

LINE	BEARING	DISTANCE
L-1	N 01°24'25" E	18.24
L-2	N 18°01'55" W	31.55
L-3	N 01°24'25" E	26.68

NEWHAVEN - 7B
 PHASE 2 AT ABACOA
 (PLAT BOOK 89,
 PAGES 100 THROUGH 105)

SEE SHEET 4 OF 4

SEE SHEET 4 OF 4

ABACOA PLAT No. 1
 TRACT WK5-B
 (PLAT BOOK 85, PAGES 7 AND 8)

ABACOA PLAT No. 1
 TRACT WK5-C
 (PLAT BOOK 85, PAGES 7 AND 8)

MARLBERRY CIRCLE
 NEWHAVEN - 7B
 PHASE 2 AT ABACOA
 (PLAT BOOK 89,
 PAGES 100 THROUGH 105)

MILLER LEGG
 & ASSOCIATES, INC.
 Engineers • Planners
 Land Surveyors
 Environmental Professionals
 LICENSED BUSINESS NUMBER 6680

2005 Vista Parkway
 Suite 100
 West Palm Beach,
 Florida 33411-2719
 (561) 689-1138
 Fax: (561) 689-8108

STREET &
 RIGHT-OF-WAY
 INTERSECTION
 (TYPICAL)